

## **History in Nephrology**

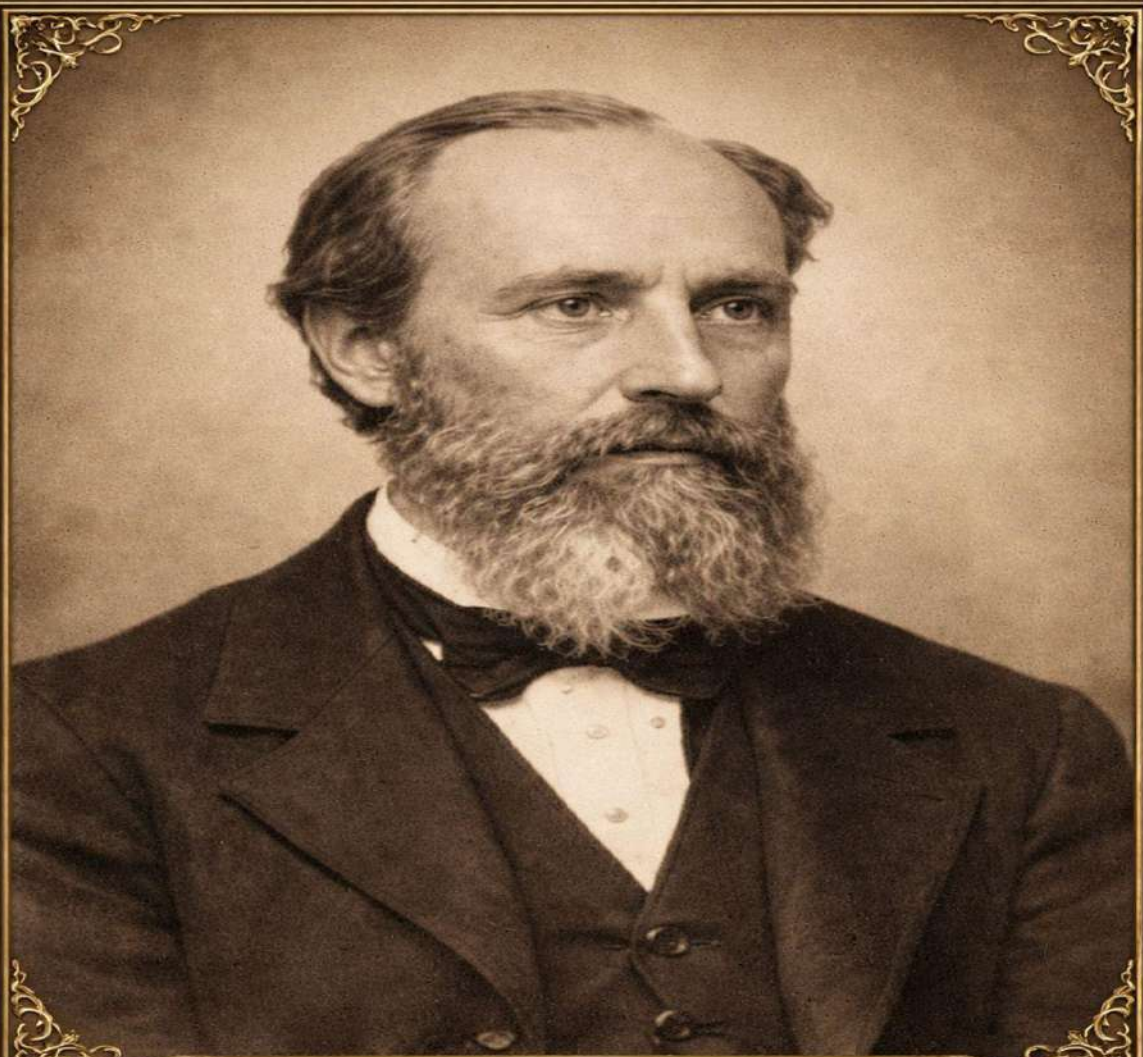
***Legends whose contributions inspire us even today!***

***Polyarteritis Nodosa (PAN)***

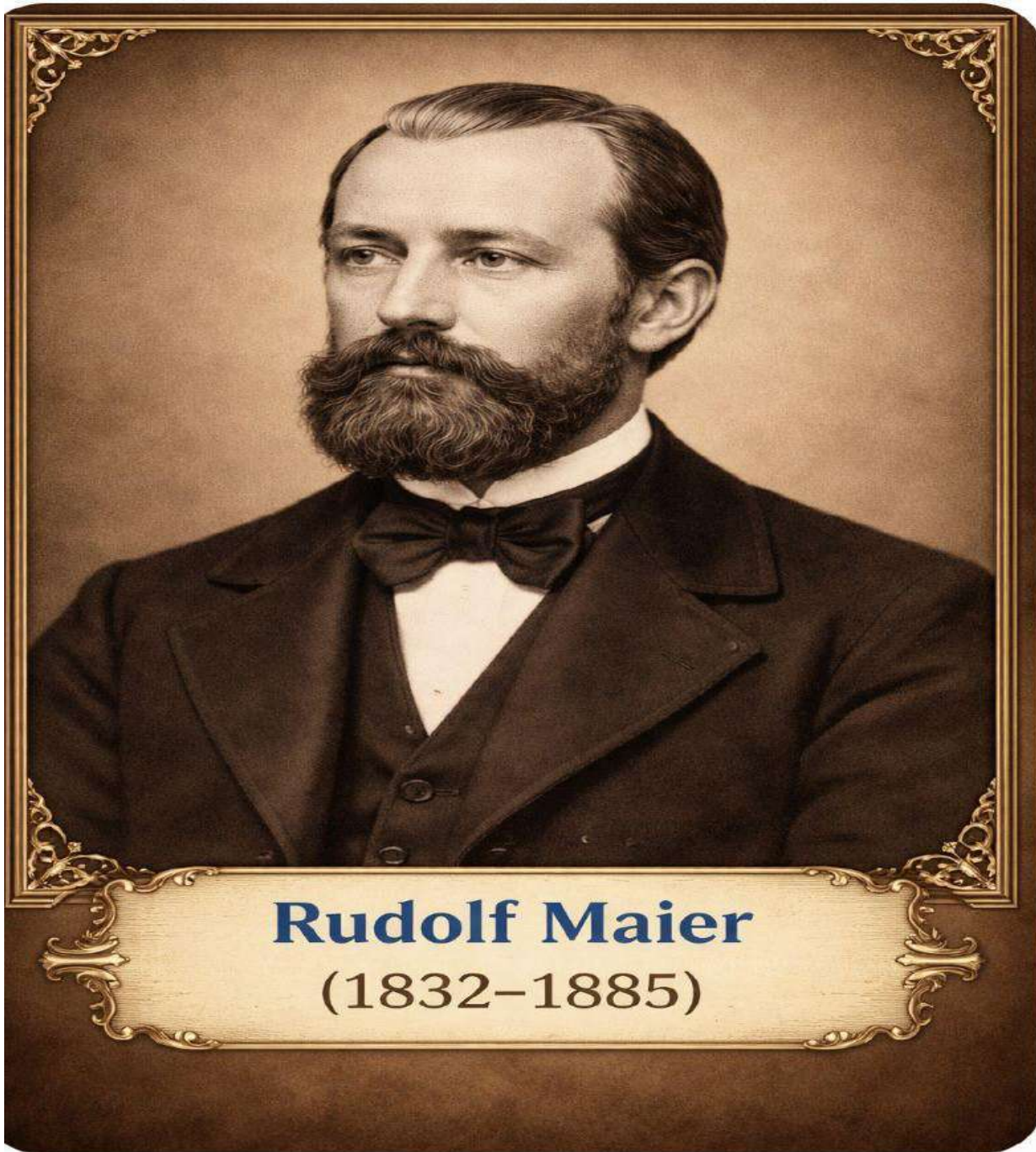
- **First described in 1866 by**

**Adolf Kussmaul, German Physician**  
**Rudolf Maier, German Pathologist**

- **Initially termed “periarteritis nodosa”**
- **Named for nodular lesions along inflamed arteries**



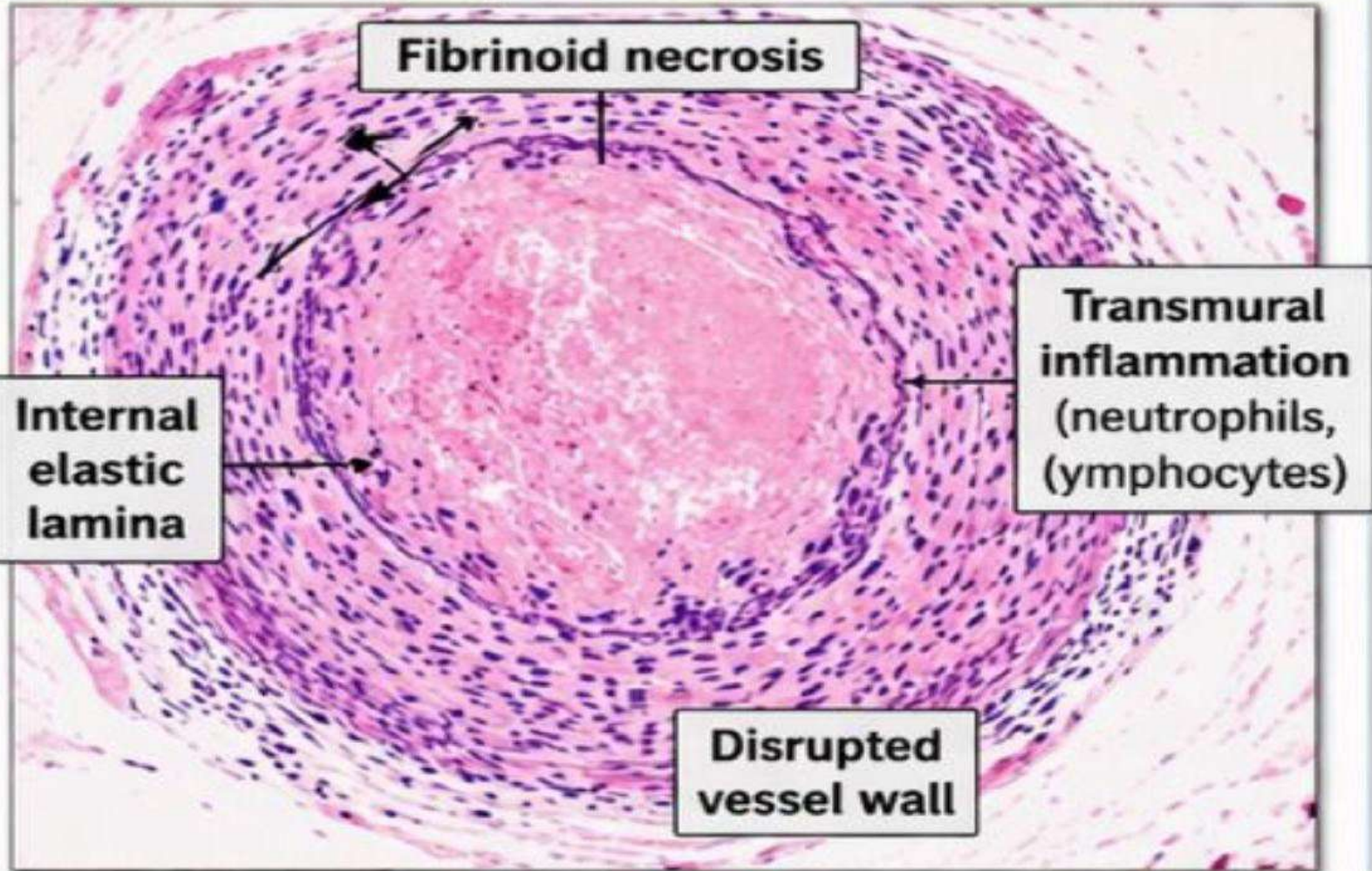
**Adolf Kussmaul**  
(1822–1902)



**Rudolf Maier**

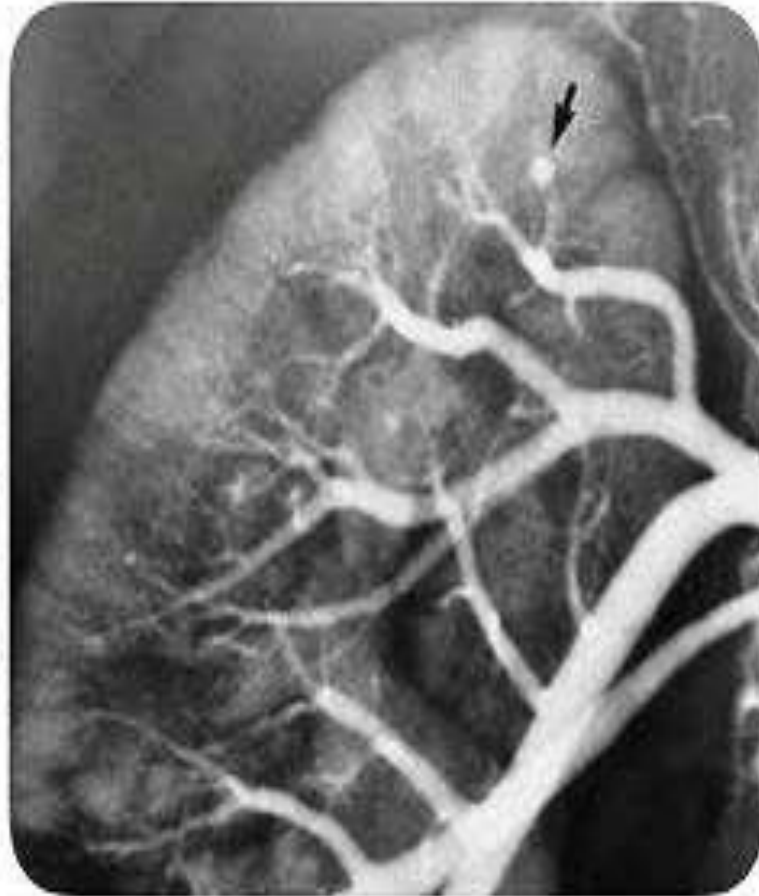
(1832-1885)

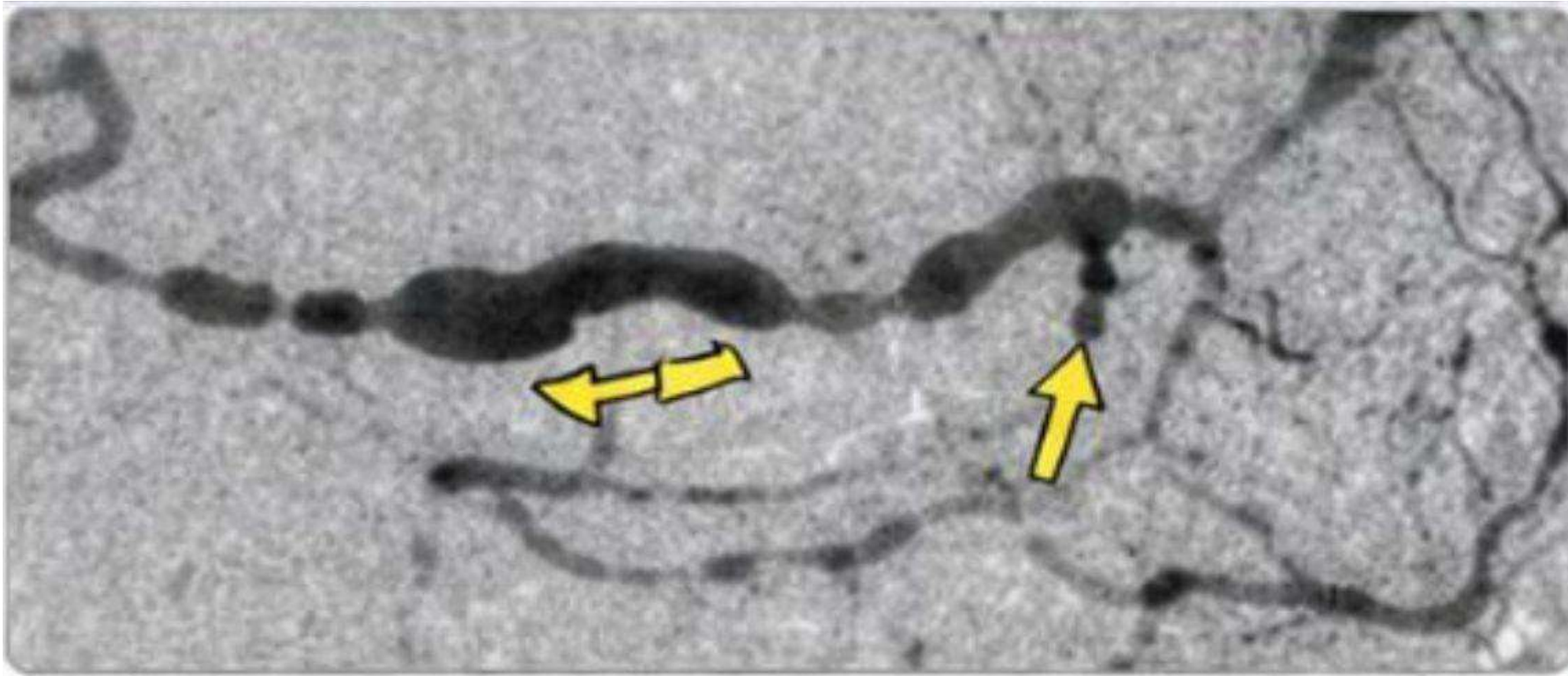
## HISTOPATHOLOGY (Medium-sized Artery)





# CT Angiogram





*Alternating stenosis and aneurysmal dilatation*

- **Multiple microaneurysms** →  
Small round outpouchings along arteries
- **Alternating stenosis + dilatation** → gives the classic
  - “string of beads / rosary sign”