

QUIZ

14/4/2025

Dr Kishore S Dharan
Consultant Nephrologist
MOSC Medical College, Kolenchery

Question No: 1

The true statement about Adeno virus nephropathy is

1. 12-15% of kidney transplant recipients have asymptomatic viremia
2. Aggressive infection and causes severe, prolonged graft failure
3. Smudgy, basophilic nuclear viral inclusions
4. Interstitial inflammation and scarring commonest pathology

Answer : C

Incidence of Asymptomatic Adeno viremia in Kidney Tx recipients is 6-7%

Histology - most common histologic manifestations included granulomas (82%), tubulocentric inflammation (73%), and tubular degenerative changes

Smudgy, basophilic nuclear viral inclusions

More aggressive inflammatory response, but graft failure rare and damage is only short lasting

WINNER

- Dr.Khamini Nagaraju
- Final Year PG Student
- Apollo hospital Chennai



Question No: 2

Which is the gene implicated in the pathogenesis of Karyomegalic interstitial nephritis?

1.FAN1

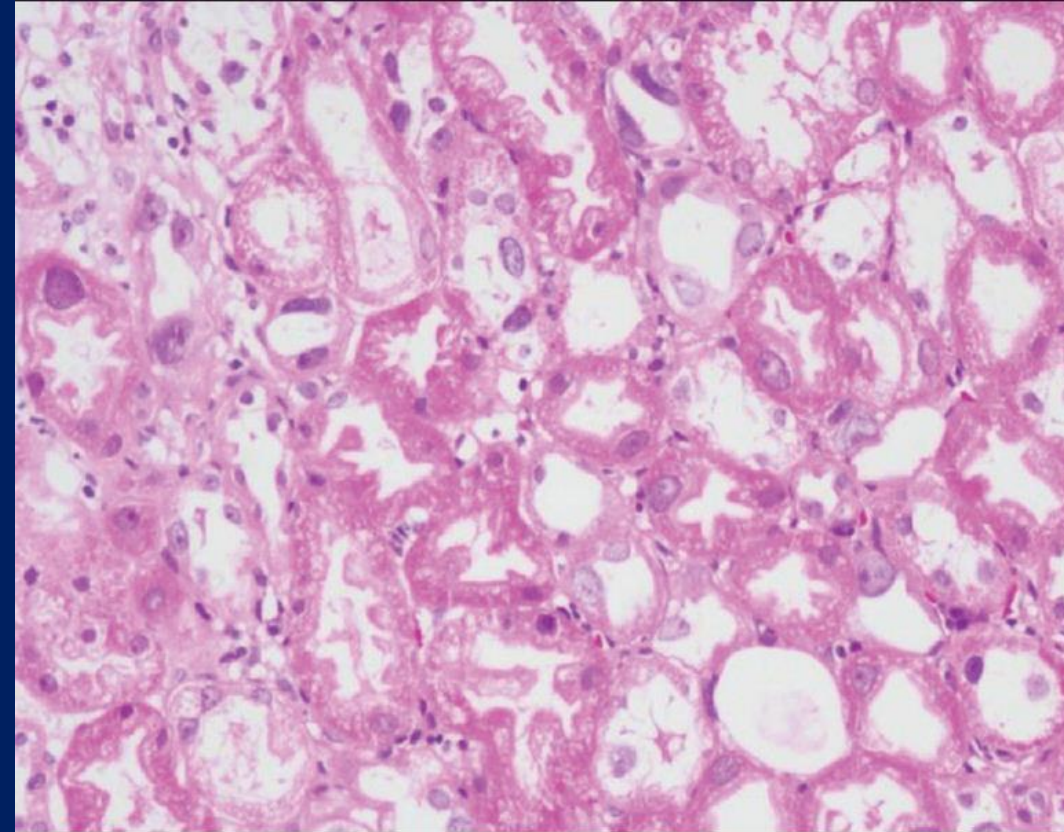
2.FBN1

3.INF2

4.KANK1

Ans: 1. FAN1

- Mutations in the FAN1 (Fanconi anemia-associated nuclease 1) gene can lead to Karyomegalic Interstitial Nephritis (KIN)
- Genetic kidney disease characterized by enlarged nuclei in tubular epithelial cells and chronic kidney failure
- Autosomal recessive inheritance.
- FAN1 gene is located on chromosome 15 and encodes a protein involved in DNA interstrand cross-link repair
- Linking chronic kidney failure to defective DNA damage repair.



WINNER

- Dr.Prashanth N
- Final year resident
- GMKMCH, Salem



Thank You